

Stainless steel flanged globe valve

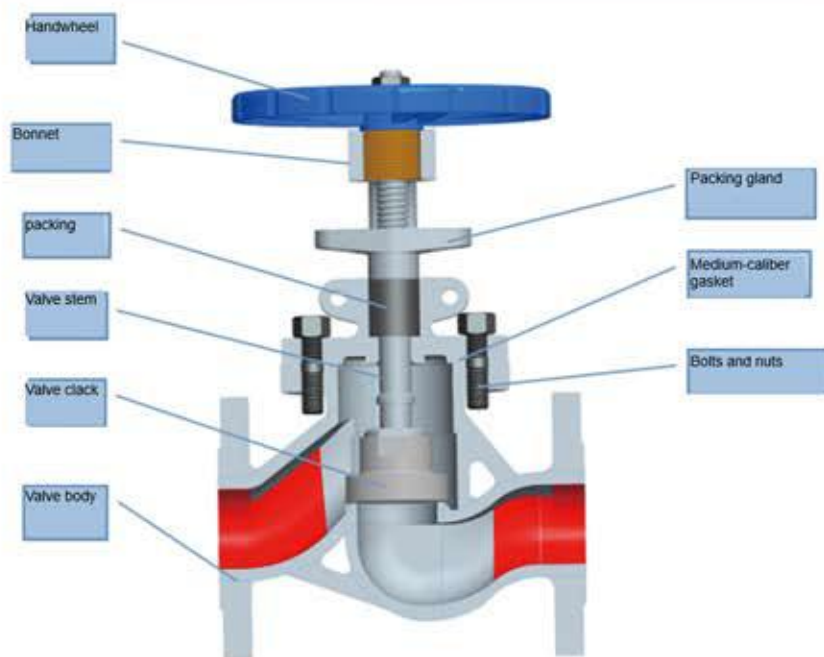


PRODUCT OVERVIEW

Body material:	CF8
Size range:	DN15 ~ 350
Pressure rating:	1.6MPa
Operating temperature:	-29 ~ 150°C
End connection:	Flanged
Applicable medium:	Water, Steam, Oil, Nitric acid liquid
Mode of operation:	Manual
Applicable industry:	Chemical & Petrochemical, Oil & Gas, Mining & Minerals, Power generation, Water & Water Treatment, Pulp & Paper, Municipal, Heating & Ventilation
Design & Manufacture:	API, ASME, ASTM, ANSI, BS, DIN, JIS, ISO, GB

DESIGN FEATURES

1. This is a flange valve, which implements the standard GB/T 12235.
2. This valve is composed of a valve body, a bonnet, a valve clack, a valve stem, valve stem nuts and a hand wheel. The valve stem rotates by turning the hand wheel to drive the valve clack to rise or fall for opening and closing. .

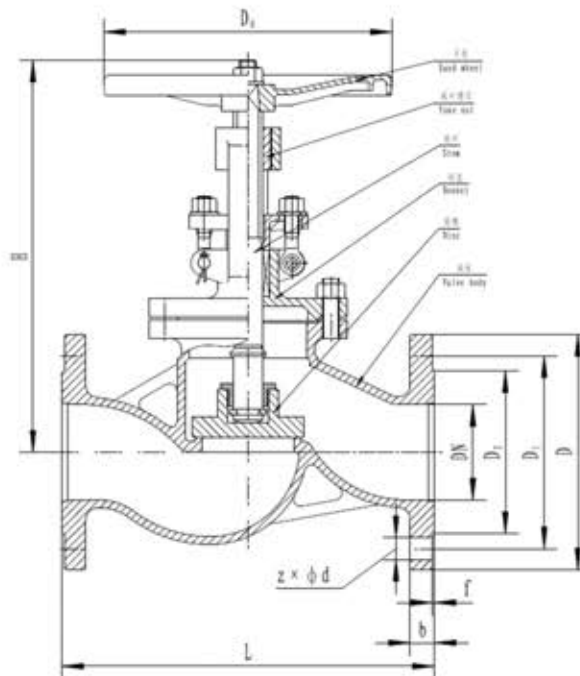


(Structure)

VALVE MATERIAL LIST

Part name	Material
Valve body, Bonnet	CF8
Valve clack	F304/CF8
Valve stem	F304
Stem nut	ZCuAl10Fe3

TECHNICAL SPECIFICATIONS



Model	DN (mm)	Size(mm)								
		L	D	D ₁	D ₂	b-f	z-φd	H ₁	H ₂	D ₀
J41W-16P	15	130	95	65	46	16-2	4-φ14	197	210	120
	20	150	105	75	58	18-2	4-φ14	211	230	120
	25	160	115	85	68	18-2	4-φ14	217	229	140
	32	180	140	100	78	18-2	4-φ18	239	250	160
	40	200	150	110	88	18-2	4-φ18	260	275	200
	50	230	165	125	102	18-2	4-φ18	275	296	200
	65	290	185	145	122	18-2	8-φ18	324	347	240
	80	310	200	160	138	20-2	8-φ18	348	380	280
	100	350	220	180	158	20-3	8-φ18	414	449	320
	125	400	250	210	188	22-2	8-φ18	468	532	360
	150	480	285	240	212	22-2	8-φ22	510	575	400
	200	600	340	295	268	24-2	12-φ22	594	675	450
	250	650	405	355	320	26-3	12-φ26	756	844	560
	300	750	460	410	375	28-4	12-φ26	850	950	640
350	850	520	470	438	30-4	16-φ26	994	1138	720	