

MSTNLAND

A professional supplier and service provider of industrial valves and solutions

C O N T E N T S

PART 01 Company introduction

PART 02 Product introduction

PART 03 Quality Control

PART 04 Cases and FAQ

PART 05 After-sale Service

PART 01

Company Introduction

绿色环保 节能智造

保护生态

Company Introduction

A professional supplier and service provider of industrial valves and solutions



MstnLand is an international supplier and service provider of industrial valves and solutions. (our web: www.mstnland.com)

We integrate R&D, manufacture, resource integration and trade service into one, provide valve selection and procurement solutions for our clients with one-stop consultation and supply.

Our industrial valves are widely used in petrochemical, general chemical, oil, gas, mining, refinery, power generation, general industrial, water conservancy, water treatment, paper making, marine, offshore, municipal engineering, heating, ventilation and etc.

The product line includes ball valves, butterfly valves, check valves, gate valves, globe valves, plug valves, safety valves, needle valves, gas valves, pipeline filters and so on, in various materials, sizes, standards and types. And in accordance with API, ASME, ASTM, ANSI, BS, DIN, JIS, ISO, GB standards.



PART 02

Product Introduction

- A. Types of industrial valves**
- B. Industry Application**
- C. Production Workshop**

A:Types of industrial valves

A professional supplier and service provider of industrial valves and solutions

We provide all kinds of industrial valves selection for our clients, see below types:

1. Gate Valves
2. Globe Valves
3. Butterfly Valves
4. Ball Valves
5. Check Valves
6. Balancing Valves
7. Regulating Valves
8. Pulg Valves
9. Brass Valves
10. Pipeline Filters
11. Customization



A-1.Gate Valves

A professional supplier and service provider of industrial valves and solutions



API600 cast steel flanged gate valve (Class 900LB)

Body material:	ASTM A216 WCB
Size range:	2"~12"
Pressure rating:	Class 900LB
Operating temperature:	-29~425℃
End connection:	Flanged
Applicable medium:	Water, Steam, Oil.



Stainless steel flanged gate valve

Body material:	CF8
Size range:	DN25~400mm
Pressure rating:	1.6~2.5MPa
Operating temperature:	≤150℃
End connection:	Flanged
Applicable medium:	Water, Steam, Oil, Nitric acid liquid.



Electric stainless steel flanged gate valve

Body material:	CF8
Size range:	DN25~400mm
Pressure rating:	1.6~2.5MPa
Operating temperature:	≤150℃
End connection:	Flanged
Applicable medium:	Water, Steam, Oil, Nitric acid liquid.



API600 stainless steel flanged gate valve

Body material:	ASTM A 351/A 351M CF8
Size range:	2"~24"
Pressure rating:	Class 150LB
Operating temperature:	-29~150℃
End connection:	Flanged
Applicable medium:	Water, Steam, Oil, Nitric acid liquid.



Cast steel flanged gate valve

Body material:	WCB
Size range:	DN40~600mm
Pressure rating:	1.6~2.5MPa
Operating temperature:	-29~425℃
End connection:	Flanged
Applicable medium:	Water, Steam, Oil.



API600 cast steel flanged gate valve (Class 600LB)

Body material:	ASTM A216 WCB
Size range:	2"~24"
Pressure rating:	Class 600LB
Operating temperature:	-29~425℃
End connection:	Flanged
Applicable medium:	Water, Steam, Oil.



Electric cast steel flanged gate valve

Body material:	WCB
Size range:	DN40~600mm
Pressure rating:	4.0~6.4MPa
Operating temperature:	-29~425℃
End connection:	Flanged
Applicable medium:	Water, Steam, Oil.



API600 cast steel flanged gate valve (Class 150LB)

Body material:	ASTM A216 WCB
Size range:	2"~48"
Pressure rating:	Class 150LB
Operating temperature:	-29~425℃
End connection:	Flanged
Applicable medium:	Water, Steam, Oil.



API600 cast steel flanged gate valve (Class 300LB)

Body material:	ASTM A216 WCB
Size range:	2"~36"
Pressure rating:	Class 300LB
Operating temperature:	-29~425℃
End connection:	Flanged
Applicable medium:	Water, Steam, Oil.



API603 forged steel flanged gate valve

Body material:	A105N/A350 LF2/A182 F11/A182 F22/A182 F304/A182 F316/A182 F304L/A182 F316L
Size range:	DN15~50mm/ 1/2"~2"
Pressure rating:	1.6~10.0MPa/ Class 150LB~1500LB
Operating temperature:	-46~538℃
End connection:	Flanged
Applicable medium:	Water, Steam, Oil, Gas, etc.

A-1. Gate Valves

A professional supplier and service provider of industrial valves and solutions



API603 forged steel socket welding gate valve

Body material:	A105N/A350 LF2/A182 F11/A182 F22/A182 F304/A182 F316/A182 F304L/A182 F316L
Size range:	DN15~50mm/ 1/2" ~2"
Pressure rating:	1.6~10.0MPa/ Class 150LB~1500LB
Operating temperature:	-46~538℃
End connection:	Welded
Applicable medium:	Water, Steam, Oil, Gas.



Cast iron flanged gate valve

Body material:	HT200 gray cast iron
Size range:	DN40~600mm
Pressure rating:	1.0~1.6MPa
Operating temperature:	-10~200℃
End connection:	Flanged
Applicable medium:	Water, Sewage, Steam, Oil.



Cast iron non-rising stem flanged gate valve

Body material:	HT200 gray cast iron
Size range:	DN25~800mm
Pressure rating:	1.0~1.6MPa
Operating temperature:	-10~100℃
End connection:	Flanged
Applicable medium:	Water, Sewage, Oil.



Underground installed non-rising stem flanged gate valve

Body material:	HT200 gray cast iron
Size range:	DN40~400mm
Pressure rating:	1.0MPa
Operating temperature:	-10~100℃
End connection:	Flanged
Applicable medium:	Water, Sewage, Oil.



Double disk parallel gate valve

Body material:	HT200 gray cast iron
Size range:	DN50~400mm
Pressure rating:	1.0MPa
Operating temperature:	-10~200℃
End connection:	Flanged
Applicable medium:	Water, Sewage, Steam, Oil.



Electric non-rising stem flanged gate valve

Body material:	Gray cast iron/ Ductile cast iron
Size range:	DN50~1600mm
Pressure rating:	1.0MPa
Operating temperature:	-10~100℃
End connection:	Flanged
Applicable medium:	Water, Sewage, Oil.

A-2.Globe Valves

A professional supplier and service provider of industrial valves and solutions



API/ASME Forged steel flanged globe valve

Body material:	A105N/A350 LF2/A182 F11/A182 F22/A182 F304/A182 F316/A182 F304L/A182 F316L
Size range:	DN15~50mm/ 1/2" ~2"
Pressure rating:	1.6~10.0MPa/ Class 150LB~1500LB
Operating temperature:	-29~538℃
End connection:	Flanged
Applicable medium:	Water, Steam, Oil, Gas, etc.



GB cast steel flanged globe valve

Body material:	WCB/LCB
Size range:	DN15~300mm
Pressure rating:	1.6~6.4MPa
Operating temperature:	-46~425℃
End connection:	Flanged
Applicable medium:	Water, Sewage, Steam, Oil.



GB stainless steel flanged globe valve

Body material:	CF8
Size range:	DN15~350mm
Pressure rating:	1.6~2.5MPa
Operating temperature:	-29~150℃
End connection:	Flanged
Applicable medium:	Water, Sewage, Steam, Oil, Nitric acid liquid.



GB antibiotics stainless steel flanged globe valve

Body material:	CF8
Size range:	DN15~350mm
Pressure rating:	1.6MPa
Operating temperature:	-29~150℃
End connection:	Flanged
Applicable medium:	Antibiotics, Biologicals, Pharmaceutical, Fermentation liquor.



GB electric cast steel flanged globe valve

Body material:	WCB
Size range:	DN15~300mm
Pressure rating:	1.6~2.5MPa
Operating temperature:	-29~425℃
End connection:	Flanged
Applicable medium:	Water, Sewage, Steam, Oil.



API/ASME forged steel socket welding globe valve

Body material:	A105N/A350 LF2/A182 F11/A182 F22/A182 F304/A182 F316/A182 F304L/A182 F316L
Size range:	DN15~50mm/ 1/2" ~2"
Pressure rating:	1.6~10.0MPa/ Class 150LB~1500LB
Operating temperature:	-29~538℃
End connection:	Welded
Applicable medium:	Water, Steam, Oil, Gas.



ASME cast steel flanged globe valve

Body material:	ASTM A216 WCB
Size range:	1 1/4"~8"
Pressure rating:	Class 150LB~300LB
Operating temperature:	-29~425℃
End connection:	Flanged
Applicable medium:	Water, Sewage, Steam, Oil.



ASME stainless steel flanged globe valve

Body material:	ASTM A 351/A 351M CF8
Size range:	1 1/4"~8"
Pressure rating:	Class 150LB
Operating temperature:	-29~150℃
End connection:	Flanged
Applicable medium:	Water, Sewage, Steam, Oil, Nitric acid liquid.

A-3.Butterfly Valves

A professional supplier and service provider of industrial valves and solutions



Stainless steel three-eccentric hard sealing butterfly valve

Body material:	CF8
Size range:	DN50~600mm
Pressure rating:	1.0~1.6MPa
Operating temperature:	-29~425℃
End connection:	Flanged
Applicable medium:	Water, Sewage, team, Oil, Nitric acid liquid.



Cast steel three-eccentric hard sealing butterfly valve

Body material:	WCB
Size range:	DN50~2000mm
Pressure rating:	0.6~2.5MPa
Operating temperature:	-29~425℃
End connection:	Flanged
Applicable medium:	Water, Sewage, Steam, Oil.



Cast steel bi-directional butterfly valve

Body material:	WCB
Size range:	DN50~1600mm
Pressure rating:	0.6~1.6MPa
Operating temperature:	-29~425℃
End connection:	Flanged
Applicable medium:	Water, Sewage, Steam, Oil.



Electric wafer type three-eccentric butterfly valve

Body material:	WCB
Size range:	DN50~600mm
Pressure rating:	1.6~2.5MPa
Operating temperature:	-29~425℃
End connection:	Wafer
Applicable medium:	Water, Sewage, Steam, Oil.



Cast steel flue ventilation butterfly valve

Body material:	Q235
Size range:	DN50~1000mm
Pressure rating:	0.25~0.6MPa
Operating temperature:	-29~300℃
End connection:	Flanged
Applicable medium:	Exhaust gas, Air



Cast steel three-eccentric soft sealing butterfly valve

Body material:	WCB
Size range:	DN50~1000mm
Pressure rating:	1.0~1.6MPa
Operating temperature:	-10~80℃
End connection:	Flanged
Applicable medium:	Water, Sewage, Oil.



Cast iron flanged butterfly valve

Body material:	Gray cast iron/ Ductile cast iron
Size range:	DN50~800mm
Pressure rating:	1.0~1.6MPa
Operating temperature:	0~80℃
End connection:	Flanged
Applicable medium:	Water, Sewage.



Cast iron pneumatic flanged butterfly valve

Body material:	Gray cast iron/ Ductile cast iron
Size range:	DN50~800mm
Pressure rating:	1.0~1.6MPa
Operating temperature:	0~80℃
End connection:	Flanged
Applicable medium:	Water, Sewage.



Non-pin concentric butterfly valve

Body material:	Ductile cast iron
Size range:	DN40~300mm
Pressure rating:	1.0~1.6MPa
Operating temperature:	0~120℃
End connection:	Wafer
Applicable medium:	Water, Sewage.



Non-pin concentric butterfly valve

Body material:	Ductile cast iron
Size range:	DN40~300mm
Pressure rating:	1.0~1.6MPa
Operating temperature:	0~120℃
End connection:	Wafer
Applicable medium:	Water, Sewage.

A-3. Butterfly Valves

A professional supplier and service provider of industrial valves and solutions



Cast iron electric concentric butterfly valve

Body material:	Gray cast iron/ Ductile cast iron
Size range:	DN50~800mm
Pressure rating:	1.0~1.6MPa
Operating temperature:	-10~80℃
End connection:	Wafer
Applicable medium:	Water, Sewage.



Cast iron concentric butterfly valve

Body material:	Gray cast iron/ Ductile cast iron
Size range:	DN50~200mm
Pressure rating:	1.0~1.6MPa
Operating temperature:	0~80℃
End connection:	Wafer
Applicable medium:	Water, Sewage



Seawater corrosion resistance hard-sealing butterfly valve

Body material:	Ductile cast iron/ Nickel-chromium ductile cast iron
Size range:	DN500mm
Pressure rating:	1.6MPa
Operating temperature:	-10~80℃
End connection:	Flanged
Applicable medium:	Seawater, Water, Sewage.



Cast iron double eccentric butterfly valve

Body material:	Ductile cast iron
Size range:	DN80~2200mm
Pressure rating:	0.6~1.6MPa
Operating temperature:	-10~80℃
End connection:	Flanged
Applicable medium:	Water, Sewage.



Cast iron three-eccentric flanged butterfly valve

Body material:	Gray cast iron/ Ductile cast iron
Size range:	DN80~2200mm
Pressure rating:	1.0MPa
Operating temperature:	-10~80℃
End connection:	Flanged
Applicable medium:	Water, Sewage.



Cast iron pneumatic concentric butterfly valve

Body material:	Gray cast iron/ Ductile cast iron
Size range:	DN50~800mm
Pressure rating:	1.0~1.6MPa
Operating temperature:	-10~65℃
End connection:	Wafer
Applicable medium:	Water, Sewage.

A-4. Ball Valves

A professional supplier and service provider of industrial valves and solutions



Cast iron internal thread ball valve

Body material:	Gray cast iron HT200
Size range:	DN15~50mm
Pressure rating:	1.6MPa
Operating temperature:	0~120℃
End connection:	Thread
Applicable medium:	Water, Oil.



GB stainless steel flanged ball valve (Hand grip)

Body material:	CF8
Size range:	DN15~200mm
Pressure rating:	1.6~2.5MPa
Operating temperature:	-29~150℃
End connection:	Flanged
Applicable medium:	Water, Sewage, Steam, Oil, Nitric acid liquid.



GB stainless steel flanged ball valve (Worm gear)

Body material:	CF8
Size range:	DN80~200mm
Pressure rating:	1.6MPa
Operating temperature:	-29~150℃
End connection:	Flanged
Applicable medium:	Water, Sewage, Steam, Oil, Nitric acid liquid.



GB stainless steel flanged ball valve (Electric)

Body material:	CF8
Size range:	DN40~200mm
Pressure rating:	1.6MPa
Operating temperature:	-29~150℃
End connection:	Flanged
Applicable medium:	Water, Sewage, Steam, Oil, Nitric acid liquid.



GB stainless steel flanged ball valve (Pneumatic)

Body material:	CF8
Size range:	DN40~200mm
Pressure rating:	1.6MPa
Operating temperature:	-29~150℃
End connection:	Flanged
Applicable medium:	Water, Sewage, Steam, Oil, Nitric acid liquid.



Fully welded ball valve

Body material:	WCB 20#
Size range:	DN15~200mm
Pressure rating:	2.5~4.0MPa
Operating temperature:	-20~200℃
End connection:	Welded
Applicable medium:	Water, Sewage, Steam, Oil.



GB cast steel flanged ball valve (Hand grip)

Body material:	WCB
Size range:	DN15~200mm
Pressure rating:	1.6~2.5MPa
Operating temperature:	-29~150℃
End connection:	Flanged
Applicable medium:	Water, Sewage, Steam, Oil.



GB cast steel flanged ball valve (Worm gear)

Body material:	WCB
Size range:	DN50~200mm
Pressure rating:	1.6MPa
Operating temperature:	-29~150℃
End connection:	Flanged
Applicable medium:	Water, Sewage, Steam, Oil.



GB cast steel flanged ball valve (Electric)

Body material:	WCB
Size range:	DN40~250mm
Pressure rating:	1.6~2.5MPa
Operating temperature:	-29~150℃
End connection:	Flanged
Applicable medium:	Water, Sewage, Steam, Oil.



GB cast steel flanged ball valve (Pneumatic)

Body material:	WCB
Size range:	DN15~200mm
Pressure rating:	1.6~2.5MPa
Operating temperature:	-29~150℃
End connection:	Flanged
Applicable medium:	Water, Sewage, Steam, Oil.

A-4. Ball Valves

A professional supplier and service provider of industrial valves and solutions



Cast iron one-piece high temperature ball valve

Body material:	Gray cast iron HT200
Size range:	DN20~200mm
Pressure rating:	1.6MPa
Operating temperature:	0~200℃
End connection:	Flanged
Applicable medium:	Water, Sewage, Steam, Oil.



API cast steel flanged ball valve

Body material:	ASTM A216 WCB
Size range:	½"~8"
Pressure rating:	Class 150LB
Operating temperature:	-29~150℃
End connection:	Flanged
Applicable medium:	Water, Sewage, Steam, Oil.



API stainless steel flanged ball valve (Hand grip)

Body material:	ASTM A 351/A 351M CF8
Size range:	½"~8"
Pressure rating:	Class 150LB
Operating temperature:	-29~150℃
End connection:	Flanged
Applicable medium:	Water, Sewage, Steam, Oil, Nitric acid liquid.



Cast iron flanged ball valve

Body material:	Gray cast iron/ Ductile cast iron
Size range:	DN15~200mm
Pressure rating:	1.0~1.6MPa
Operating temperature:	0~150℃
End connection:	Flanged
Applicable medium:	Water, Sewage, Steam, Oil.

A-5. Check Valves

A professional supplier and service provider of industrial valves and solutions



Cast iron swing check valve

Body material:	Gray cast iron
Size range:	DN40~600mm
Pressure rating:	1.0~1.6MPa
Operating temperature:	0~120℃
End connection:	Flanged
Applicable medium:	Water, Sewage, Oil.



Stainless steel lift check valve

Body material:	CF8/CF8M
Size range:	DN40~200mm
Pressure rating:	1.6MPa
Operating temperature:	-29~150℃
End connection:	Flanged
Applicable medium:	Water, Sewage, Steam, Oil, Nitric acid liquid.



Stainless steel swing check valve

Body material:	CF8/CF8M
Size range:	DN50~200mm
Pressure rating:	1.0~1.6MPa
Operating temperature:	-29~150℃
End connection:	Flanged
Applicable medium:	Water, Sewage, Steam, Oil, Nitric acid liquid, Acetic acid liquid.



Cast steel lift check valve

Body material:	WCB
Size range:	DN15~300mm
Pressure rating:	1.6~2.5MPa
Operating temperature:	-29~425℃
End connection:	Flanged
Applicable medium:	Water, Sewage, Steam, Oil.



Cast steel swing check valve

Body material:	WCB
Size range:	DN40~200mm
Pressure rating:	1.6~2.5MPa
Operating temperature:	-29~425℃
End connection:	Flanged
Applicable medium:	Water, Sewage, Steam, Oil.



Cast iron silencing check valve

Body material:	Gray cast iron
Size range:	DN40~250mm
Pressure rating:	1.6MPa
Operating temperature:	0~80℃
End connection:	Flanged
Applicable medium:	Water, Sewage.



Cast iron rubber disc swing check valve

Body material:	Ductile cast iron QT450-10
Size range:	DN50~200mm
Pressure rating:	1.6MPa
Operating temperature:	0~80℃
End connection:	Flanged
Applicable medium:	Water, Sewage.



Cast iron lift check valve

Body material:	Gray cast iron/ Ductile cast iron
Size range:	DN15~200mm
Pressure rating:	1.6MPa
Operating temperature:	0~200℃
End connection:	Flanged
Applicable medium:	Water, Sewage, Steam, Oil.

A-6. Balancing Valves

A professional supplier and service provider of industrial valves and solutions



Number-lock balance valve

Body material:	Ductile cast iron QT450-10
Size range:	DN32~200mm
Pressure rating:	1.6MPa
Operating temperature:	-10~120℃
End connection:	Flanged
Applicable medium:	Water, Sewage.



Cast iron butterfly balance valve

Body material:	Gray cast iron HT200
Size range:	DN250~350mm
Pressure rating:	1.6MPa
Operating temperature:	0~100℃
End connection:	Flanged
Applicable medium:	Water, Sewage.



Cast iron internal thread globe balance valve

Body material:	Gray cast iron HT200
Size range:	DN15~50mm
Pressure rating:	1.6MPa
Operating temperature:	0~150℃
End connection:	Threaded
Applicable medium:	Water, Sewage.



Cast iron flanged globe balance valve

Body material:	Gray cast iron HT200
Size range:	DN25~150mm
Pressure rating:	1.6MPa
Operating temperature:	0~150℃
End connection:	Flanged
Applicable medium:	Water, Sewage.

A-7.Regulating Valves

A professional supplier and service provider of industrial valves and solutions



Cast iron flanged regulating valve

Body material:	Gray cast iron
Size range:	DN32~300mm
Pressure rating:	1.6MPa
Operating temperature:	0~150℃
End connection:	Flanged
Applicable medium:	Water, Sewage, Oil.



Cast iron internal thread regulating valve

Body material:	Gray cast iron
Size range:	DN15~50mm
Pressure rating:	1.6MPa
Operating temperature:	0~120℃
End connection:	Threaded
Applicable medium:	Water, Sewage, Oil.

A-8.Plug Valves

A professional supplier and service provider of industrial valves and solutions



Cast iron flanged plug valve

Body material:	Gray cast iron
Size range:	DN20~150mm
Pressure rating:	1.0MPa
Operating temperature:	0~100℃
End connection:	Flanged
Applicable medium:	Oil



Cast iron internal thread plug valve

Body material:	Gray cast iron
Size range:	DN15~50mm
Pressure rating:	1.0MPa
Operating temperature:	-10~100℃
End connection:	Threaded
Applicable medium:	Oil

A-9.Brass Valves

A professional supplier and service provider of industrial valves and solutions



Y-type brass pipeline filter

Body material:	Brass alloy
Size range:	1/2"~1"
Pressure rating:	1.6MPa
Operating temperature:	-20~150℃
End connection:	Threaded
Applicable medium:	Water, Household pipe gas, Oil.



Brass internal thread non-rising stem gate valve

Body material:	Brass alloy
Size range:	1/2"~2"
Pressure rating:	1.6MPa
Operating temperature:	-20~150℃
End connection:	Threaded
Applicable medium:	Water, Household pipe gas, Air.



Brass internal thread swing check valve

Body material:	Brass alloy
Size range:	1/2"~2"
Pressure rating:	1.6MPa
Operating temperature:	≤100℃
End connection:	Threaded
Applicable medium:	Water, Sewage, Oil, Gas.



Brass internal thread globe valve

Body material:	Brass alloy
Size range:	1/2"~2"
Pressure rating:	1.0~1.6MPa
Operating temperature:	≤150℃
End connection:	Threaded
Applicable medium:	Water, Sewage, Air.



Brass internal thread balancing valve

Body material:	Brass alloy
Size range:	1/2"~2"
Pressure rating:	1.6MPa
Operating temperature:	-10~130℃
End connection:	Threaded
Applicable medium:	Water, Polyethylene glycol solution



Brass switching pipeline filter

Body material:	Brass alloy
Size range:	1/2"~1"
Pressure rating:	1.6MPa
Operating temperature:	-20~150℃
End connection:	Threaded
Applicable medium:	Water, Household pipe gas, Oil.



Brass internal thread ball valve

Body material:	Brass alloy
Size range:	1/2"~2"
Pressure rating:	1.6MPa
Operating temperature:	-20~150℃
End connection:	Threaded
Applicable medium:	Water, Household pipe gas, Air, Non-corrosive liquids.



Brass air evacuation valve

Body material:	Brass alloy
Size range:	1/2"~1"
Pressure rating:	1.6MPa
Operating temperature:	-10~120℃
End connection:	Threaded
Applicable medium:	Water, Air, Non-corrosive liquids.

A-10.Pipeline Filters

A professional supplier and service provider of industrial valves and solutions



Y-type cast iron flanged pipeline filter

Body material:	Gray cast iron/ Ductile cast iron
Size range:	DN32~450mm
Pressure rating:	1.6MPa
Operating temperature:	0~200℃
End connection:	Flanged
Applicable medium:	Water, Steam, Oil.



Y-type stainless steel pipeline filter

Body material:	CF8
Size range:	DN15~200mm
Pressure rating:	1.6~2.5MPa
Operating temperature:	-29~150℃
End connection:	Flanged
Applicable medium:	Water, Steam, Oil, Nitric acid liquid.



Y-type cast steel pipeline filter

Body material:	WCB
Size range:	DN15~500mm
Pressure rating:	1.6~2.5MPa
Operating temperature:	-29~425℃
End connection:	Flanged
Applicable medium:	Water, Steam, Oil.



Y-type cast iron internal thread pipeline filter

Body material:	Gray cast iron
Size range:	DN15~50mm
Pressure rating:	1.6MPa
Operating temperature:	0~120℃
End connection:	Threaded
Applicable medium:	Water, Oil.



A-11. Customization

A professional supplier and service provider of industrial valves and solutions

MstnLand offer standard valves in a variety of sizes and configurations, all of which can be modified in numerous ways to meet your needs. Or, we can put our engineering expertise and innovative manufacturing capabilities to create a customized valve that matches the requirements of your unique application.

MstnLand' s team of experienced engineers take the time to understand customer applications, and provide innovative custom solutions for each customer' s unique requirements. And we will work with you from the initial design stages through the production of your finished product to deliver customized valves that will meet or exceed your expectations. We can work from your design files, or develop a completely new design that matches your specifications for fit, form, and function.

Multiple features of your valves can be customized, including:

- **Port size**
- **Seal materials**
- **Anodic color (valve body)**
- **Fittings**
- **Spacing of ports**
- **Overall valve size**
- **Actuator color**

B: Industry Application

A professional supplier and service provider of industrial valves and solutions

Different types of valves can be used in various industries. MstnLand provides specific valve solutions for all your flow management needs across a variety of industries.

MstnLand valves types and their applications can meet the demand of pressure, temperature and harsh corrosive environment and provide reliable and stable support to customer operations in most industries:

- **Chemical & Petrochemical**
- **Oil & Gas**
- **Mining & Minerals**
- **Power Generation**
- **Water & Water Treatment**
- **General Industrial**
- **Municipal**
- **Heating & Ventilation**
- **Marine & Offshore**
- **Pulp & Paper**





Chemical & Petrochemical Application fields:

- Petrochemical
- General chemical
- Polymers
- Pharmaceutical
- Specialty chemical

B-2: Oil & Gas

A professional supplier and service provider of industrial valves and solutions



Oil & Gas Application:

- **Onshore oil and gas field**
- **Oil and gas transportation**
- **Oil and gas storage**

B-3: Mining & Minerals

A professional supplier and service provider of industrial valves and solutions



Mining & Minerals Application fields:

- Mine
- Metallurgical refinery
- Acid plant and so on

B-4: Power Generation

A professional supplier and service provider of industrial valves and solutions



Power Generation Application fields:

- **Coal power**
- **Gas power**
- **Nuclear power**
- **Renewable power**



Water & Wastewater Application fields:

- **Waste water/sewage treatment**
- **Water management**
- **Desalination**

B-6: General Industrial

A professional supplier and service provider of industrial valves and solutions



General industries encompass every aspect of our modern life. General processes in modern industry require a wide variety of valves. Every industrial plant has its own distinct characteristics and must therefore be considered individually. Pressure, backpressure, temperatures, and media are very different. And it also reflected in the requirements on valves.

MstnLand' s general industrial valve range covers almost requirements of general industrial field. It widely used in the general industrial field with almost process conditions to regulate the flow rate, pressure, or temperature of the medium flow.



B-7: Municipal

A professional supplier and service provider of industrial valves and solutions



Municipal Application fields:

- **Municipal engineering**
- **Fire protection engineering**
- **Urban water supply and drainage system**
- **Living sewage treatment system**

B-8: Heating & Ventilation

A professional supplier and service provider of industrial valves and solutions



The HVAC industry relies on the automated control of hot and cold air, water, and hydronic heat transfer fluids or refrigerants through complex piping systems, ductwork, and heat exchangers. As one of the important accessories in HVAC industry, the valve is a control component in the fluid conveying system. It has the functions of cut-off regulation and diversion to prevent countercurrent pressure stabilization and diversion or overflow and pressure relief.

MstnLand's HVAC control valves are critical components in an end-to-end system, and their efficiency is an important factor in overall system efficiency. Choose from thousands of valve and actuator combinations that are built to deliver efficient, dependable, long-lasting and leak-proof performance

B-9: Marine & Offshore

A professional supplier and service provider of industrial valves and solutions



Marine & Offshore Application:

- Offshore oil-gas field
- Offshore engineering
- Shipbuilding industry

B-10: Pulp & Paper

A professional supplier and service provider of industrial valves and solutions

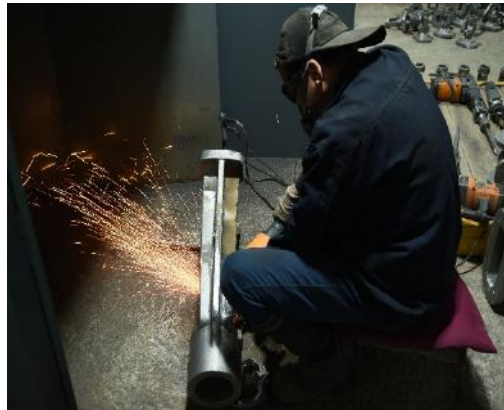


The applications within the pulp and paper industry are often very difficult due to erosive, corrosive and high cycle services. Some of the most demanding applications include media such as calcium carbonate, lime, slurries and white-, green- and black liquor. These circumstances requires a careful valve selection with consideration to design features, abrasion resistance and wetted trim requirements.

MstnLand offers a full line of gate, globe, check, and ball valves to accommodate many of the corrosive chemicals found throughout a pulp and paper mill. Correct valve selection throughout the many phases of a pulp and paper mill is extremely important. Pressure, temperature rating, and body material construction, along with packing and gasket combinations all factor into selecting the correct valve for each paper mill application.

C: Production Workshop

A professional supplier and service provider of industrial valves and solutions





PART 03

Quality Control

Quality Control

A professional supplier and service provider of industrial valves and solutions



MstnLand is specialized in industrial valves sales and service. We offer the valve solution in harsh and rigorous working condition for customers, especially in high temperature, high pressure, and extra cryogenic circumstances sea water, and other corrosive media.

We implements the quality management system, strictly controls the quality protection system and project process, and controls the product quality from the aspects of drawing review, raw materials, factory manufacturing, delivery test, and 72-hour operation test on the construction site, so as to ensure that the product quality process can be traced.

In the bidding contract, we guarantee the valves for tender are made of reasonable technology and qualified materials and comply the quality, specifications and performance requirements of the tender, to ensure the correct installation of equipment, normal operation and maintenance and the satisfactory performance of its useful life.

After the completion of the equipment manufacturing, our company will make a detailed and comprehensive examination of the quality and performance requirements stipulated according to the contract. If the quality can meet the requirements, we will issue the product certification and inspect records and notify the buyer to inspect and accept the equipment in our factory.

In the warranty period, there are any defects on the design, technology, material and any deficiency or malfunction, equipment replacement, repair costs involved and the consequent losses shall be borne by the company, with a corresponding extension of the replacement and repair part' s quality assurance period.

Quality Control

A professional supplier and service provider of industrial valves and solutions

Certificates

MstnLand is accredited to ISO 9001 and ISO 14000, along with numerous other standards approvals (available on request). We can provide full certification for all industrial valves supplied including copies of test certificates and our own report certificate

Our range of other supplies includes:

- Valves related equipment
- Design inputs and engineering solutions
- Certificate guaranteed
- Installation project
- Accessory supplying
- Safety testing

MstnLand provides customers with world-class designed, fabricated and machined valves. When you need valves in stock sizes and pressure and when you need customized valves for your special needs, we are always on your side.





PART 04

After-Sale Service

After-sales Service and Related Commitments

- MstnLand international standard valve manufacturer provides regular free service for the equipment we undertake;
- According to the requirements of the demander, provide technical guidance on use;
- Ensure the supply of spare parts for maintenance;
- Responsible for and guide the maintenance service, and provide regular guidance and maintenance;
- Provide regular telephone or home return visits to consumers;
- Deal with customers' letters, visits, and telephone complaints, and answer customers' inquiries. At the same time, we collect consumers' opinions on product quality in various ways and make timely improvement according to the situation.

Free After-sales Service Within the Guarantee Period

- MstnLand provides a free warranty for all the equipment provided. Once quality problems are found, such as damage to equipment parts, we will replace them free of charge;
- MstnLand will arrange qualified and experienced personnel to contact the site to track the operation of the equipment. Guide routine inspection and maintenance of equipment on a regular basis. When necessary, design and implement a modification to ensure the normal operation of equipment and provide training to the staff of the demander in use and maintenance;
- Provide product operation manual, training manual, process calculation book, drawing, and other related materials, and provide regular inspection and maintenance technical guidance for after-sales products;
- In the last month of the warranty period of the equipment, we consult the owner to communicate the use of the equipment, and provide free parts for the parts that may be damaged for replacement, and demonstrate that their performance meets the requirements.

After-sales Service Out-of-guarantee Period

- MstnLand provide lifetime free remote technical support for our industrial valves. And also provide paid on-site maintenance services according to customer requirements.



PART 05

Cases and FAQ

Cases

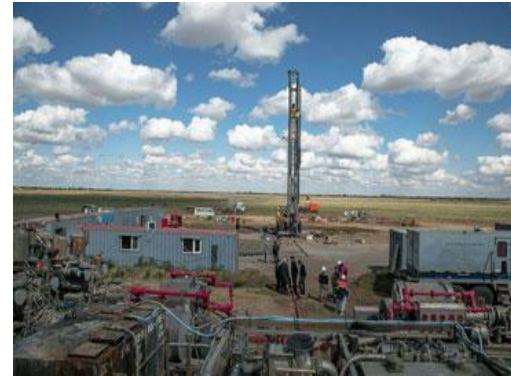
A professional supplier and service provider of industrial valves and solutions



SABIC Corporation (Saudi Arabia) Indonesia Natural Gas Project



SDI Power Station, Valencia, Spain



Kazakhstan Kolzhan Prospecting Project



Uzbekistan Tusterrick Pumping Station Project



Genoa Environmental Protection Project, Italy



Water Supply System Project In Krakow, Poland



Sung Long Thermal Power Plant Project In Vietnam



TPI PP 150MW Power Plant In Thailand

Q:Can I have a sample order for valve?

A:Definitely Yes. We welcome your sample order for test and quality check. Mixed samples are acceptable.

Q:Can you provide OEM or ODM service?

A:Yes, we have professional research & development team. The products can be manufactured as per your request.

Q:Can you provide the relevant documentation and certificate?

A:Yes, we can provide you with the documentation and certificate you need , ISO9001: 2000 international quality system certification, (CE)certification of the European Community, Det Norske Veritas (DNV) factory certificate, Lloyd's Register (LR) factory certificate, China Classification Society (CCS) quality system certificate and the FM/UL certification of the US, Bureau Veritas (BV) , American Bureau of Shipping(ABS) etc. Of course we can also provide you the test Report; Certificate of Material Analysis; Certificate of Origin; and other export documents if required.

Q:What is your terms of delivery?

A:We accept EXW, FOB, CIF, DAP etc. You can choose the one which is the most convenient for you.

Q:What's the package and how do you ship the goods?

A:Usually sea worthy plywood cases. We usually ship by sea. Train and air delivery are also optional.

Q:How to deal with after sales ?

A:warranty time: 12 months from the shipment. And we will be responsible for all the quality problems. Longer warranty period could be provided with detailed request and discussion.

Q:What is the average lead time?

A:For samples, the delivery time is about 5-7 days. For batch production, the lead time is about 15-60 days after receiving the deposit payment. We can provide production schedule and related photos every two weeks. The lead times become effective when (1) we have received your deposit, and (2) we have your final approval for production drawings. If our lead times do not work with your deadline, please send your requirements with your sale. In all cases we will try to accommodate our production plan to your needs.

Thank You

Why chose us **MstnLand**



1. Genuine products with excellent quality and competitive price.
2. Cooperating with customers all over the world from more than 60 countries and regions, knowing the markets very well.
3. We have been specializing in flow control area for more than 15 years. Everyone can be rest assured working with us.
4. After-sale services will be highly-satisfying. Any problem and feed backs will be answered in short time.